

Telescopic pillar

For infant care CPMB

Benefits

- Universal power supply
- Plug and play
- Soft start and stop control
- Low noise level
- Cable through pillar
- Grounding continuity

Standards

- IEC 60601-1:2005
(3rd edition) compliant



Dimensional drawing

- Hand switch
- Foot switch
- Desk switch
- Socket box
- Mains cable
- Detachable mains cord

24 V DC

+

-

PE

Operating device

M

100-240 V AC

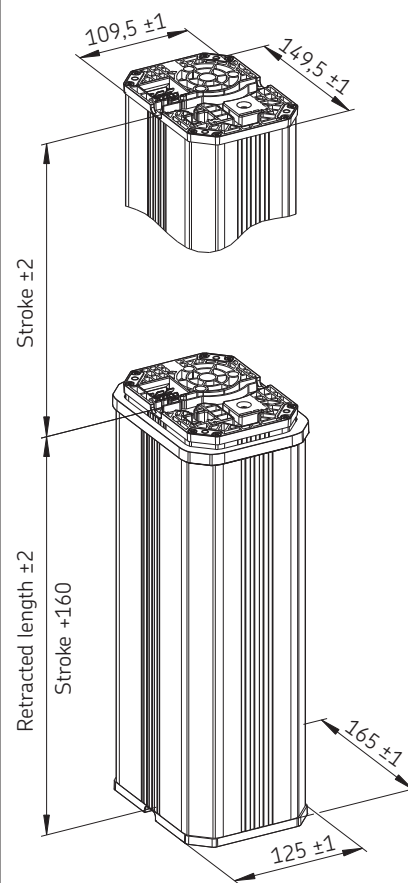
L

N

PE

Operating device

M



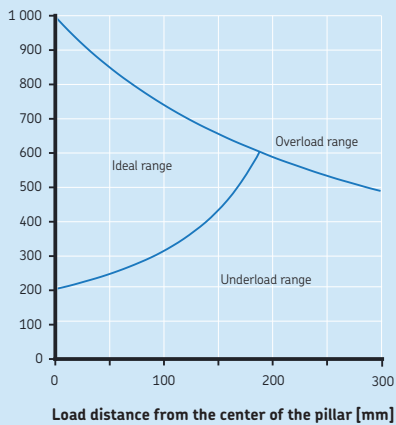
	Unit	CPMB1-1	CPMB1-2	CPMB2-2
Rated push load (with self locking)	N	1 000	2 000	2 000
Rated pull load	N	0	0	0
Bending moment (dynamic)	Nm	up to 115 ¹⁾	up to 250 ¹⁾	up to 250 ¹⁾
Speed (full load to no load)	mm/s	14 to 15	11 to 15	11 to 15
Telescopic pillar version	# of section	2-section	2-section	2-section
Stroke	mm	230 to 400	230 to 400	200 to 400
Retracted length	mm	S+160	S+160	S+160
Static Load (Max) in push way	N	8 000	8 000	8 000
Static bending moment (Max)	Nm	500	500	500
Voltage (rated)	V	100–240 AC 50/60 Hz	100–240 AC 50/60 Hz	24 DC
Input current (rated)	A	1,5	1,6	5
Duty cycle: intermittent operation	on/off	1 min./9 min.	1 min./9 min.	1 min./9 min.
Ambient temperature	°C	+10 to +40	+10 to +40	+10 to +40
Type of protection	IP	20	20	20
Protection class	–	I	I	–
Type of control	–	electrical	electrical	electrical
Noise level (Max)	dB(A)	45	45	45
Weight	kg	8 to 11	9 to 12	8 to 11
Stand by power (Max)	W	1 to 2,1 ²⁾	1 to 2,1 ²⁾	–

1) For details, see offset load diagrams

2) The lowest value when powered with the lowest voltage

Offset load diagram CPMB1-1

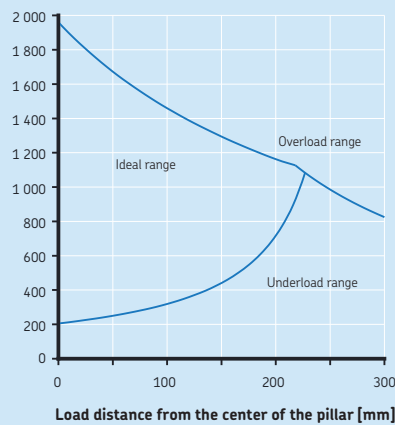
Load [N]



Offset load at full extension in the best axis

Offset load diagram CPMB1-2 and CPMB2-2

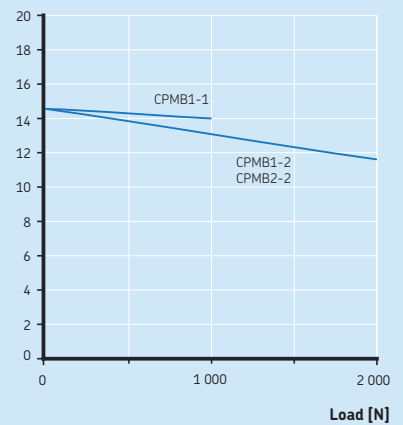
Load [N]



Offset load at full extension in the best axis

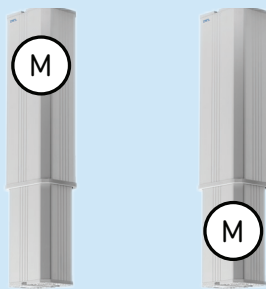
Speed-load diagram

Speed [mm/s]



More flexibility with Series CPMB design options Built-in with outer tube on top

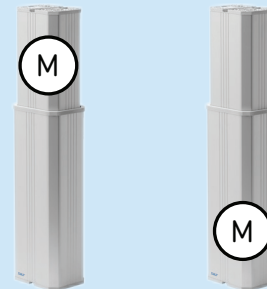
- More hygienic and easy-to-clean design



Motor orientation B Motor orientation A

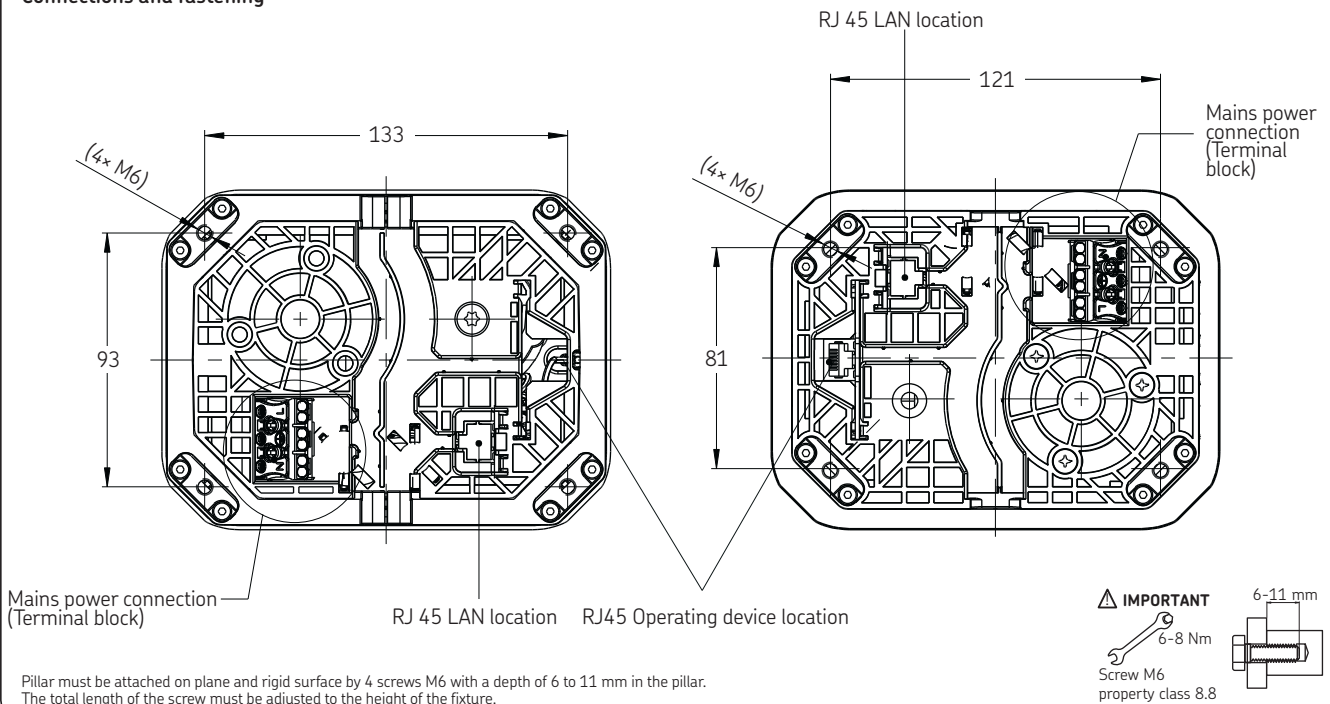
Built-in with outer tube on bottom

- More aesthetic design

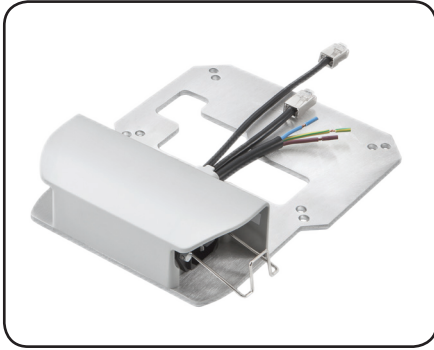


Motor orientation A Motor orientation B

Connections and fastening



Inlet socket box



Benefits

- Multifunction plug and play accessory
- Detachable mains power cord
- Replaceable fuses
- LAN Connector
- Easy to use
- Cord strain relief

Standards

- IEC 60601-1:2005 (3rd edition) compliant

Suitable products

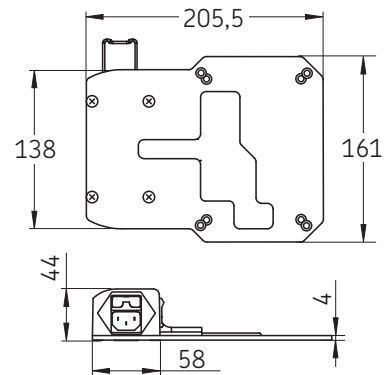
	Pillars	Hand switches	Foot switches	Desk switches	Mains cables	Detachable mains cords
ZDV-348220-002	CPMB1-1 CPMB1-2 CPMB2-2	EHA41-13N10N-000	STL01-GW1000-X190	STK01-SW3000-X100 STK01-UW3000-X100	ZKA-140449-2500 ZKA-140450-2500 ZKA-140451-2500 ZKA-140452-2500 ZKA-140458-2500 ZKA-140460-2500	ZKA-140453-2500 ZKA-140454-2500 ZKA-140455-2500 ZKA-140456-2500 ZKA-140459-2500 ZKA-140461-2500

Technical data

- IEC inlet mains power socket with retainer
- 1 RJ45 for operating device
- 1 RJ45 for LAN
- 2 replaceable fuses 8 A
- Plate with holes as the plates of the pillar CPMB
- Can be fastened on inner and outer tube

Designation	Order N°
ZDV-348220-002	0130030

Dimensional drawing



Outlet socket box



Benefits

- Multifunction plug and play accessory
- 3 IEC outlet sockets
- Replaceable fuses
- Integrated mounting plate
- LAN Connector
- Easy to use

Standards

- IEC 60601-1:2005 (3rd edition) compliant

Suitable products

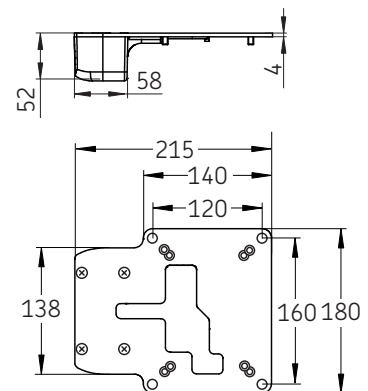
	Pillars	Hand switches	Foot switches	Desk switches	Mains cables	Detachable mains cords
ZDV-348221-002	CPMB1-1 CPMB1-2 CPMB2-2	EHA41-13N10N-000	STL01-GW1000-X190	STK01-SW3000-X100 STK01-UW3000-X100	ZKA-140449-2500 ZKA-140450-2500 ZKA-140451-2500 ZKA-140452-2500 ZKA-140458-2500 ZKA-140460-2500	ZKA-140453-2500 ZKA-140454-2500 ZKA-140455-2500 ZKA-140456-2500 ZKA-140459-2500 ZKA-140461-2500

Technical data

- 3 IEC mains power outlet sockets
- 1 RJ45 for operating device
- 1 RJ45 for LAN
- 2 replaceable fuses 8 A
- Integrated mounting plate with 4 holes 9 mm diameter
- 4 screws to fasten on pillar CPMB
- Can be fastened on inner and outer tube

Designation	Order N°
ZDV-348221-002	0130032

Dimensional drawing



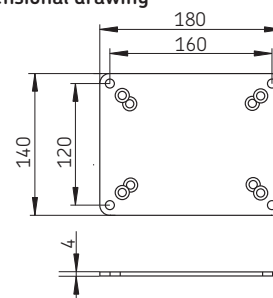
Mounting plate



Suitable products

	Pillars		
	CPMB1-1	CPMB1-2	CPMB2-2
ZPL-348382	●	●	●

Dimensional drawing



Benefits

- Easy to use

Technical data

- Can be fastened on inner and outer tube
- Mounting plate with 4 holes 9 mm diameter

Designation

ZPL-348382

Order N°

0130024

Mains cable and detachable mains cord

Mains cable



Suitable products

	Pillars			Socket boxes	
	CPMB1-1	CPMB1-2	CPMB2-2	ZDV-348220-002	ZDV-348221-002
ZKA-140449-2500	●	●			
ZKA-140450-2500	●	●			
ZKA-140451-2500	●	●			
ZKA-140452-2500	●	●			
ZKA-140458-2500	●	●			
ZKA-140460-2500	●	●			

Suitable products

	Pillars			Socket boxes	
	CPMB1-1	CPMB1-2	CPMB2-2	ZDV-348220-002	ZDV-348221-002
ZKA-140453-2500				●	
ZKA-140454-2500				●	
ZKA-140455-2500				●	
ZKA-140456-2500				●	
ZKA-140459-2500				●	
ZKA-140461-2500				●	

Detachable mains cord



Benefits

- Easy to use
- Identification by a product label

Standards

- IEC 60601-1:2005 (3rd edition) compliant

Mains cable and detachable mains cord – Ordering key

Description	Designation	Order N°
Mains cable straight 2,5 m, Schuko : Germany, France,	ZKA-140449-2500	0130015
Mains cable straight 2,5 m, Typ-L : Italy	ZKA-140450-2500	0130016
Mains cable straight 2,5 m, British standard : UK	ZKA-140451-2500	0130017
Mains cable straight 2,5 m, NEMA : USA, Japan, ...	ZKA-140452-2500	0130018
Mains cable straight 2,5 m, SEV : Switzerland	ZKA-140458-2500	0130256
Mains cable straight 2,5 m, AS 3112 : PRC, Australia	ZKA-140460-2500	0130391
Detachable mains cord straight 2,5 m, Schuko : Germany, France,	ZKA-140453-2500	0130019
Detachable mains cord straight 2,5 m, Typ-L : Italy	ZKA-140454-2500	0130020
Detachable mains cord straight 2,5 m, British standard : UK	ZKA-140455-2500	0130021
Detachable mains cord straight 2,5 m, NEMA : USA, Japan, ...	ZKA-140456-2500	0130022
Detachable mains cord straight 2,5 m, SEV : Switzerland	ZKA-140459-2500	0130257
Detachable mains cord straight 2,5 m, AS 3112 : PRC, Australia	ZKA-140461-2500	0130392

Desk switch – STK



Benefits

- Easy and precise
- Stylish design
- Tactile buttons with finger guide
- 2 colors LED for power and feedback status

Standards

- IEC 60601-1:2005 (3rd edition) compliant

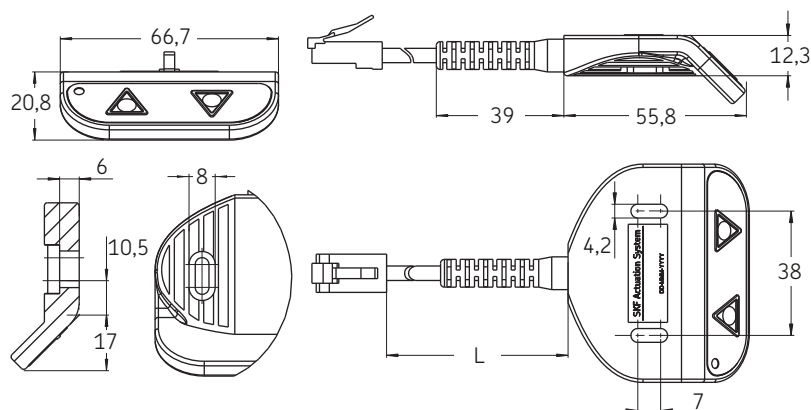
Suitable products

	Pillars			Socket boxes	
	CPMB1-1	CPMB1-2	CPMB2-2	ZDV-348220-002	ZDV-348221-002
STK01-SW3000-X100	●	●	●	●	●
STK01-UW3000-X100	●	●	●	●	●

Dimensional drawing

Designation	L mm
STK01-SW3000-X100	500
STK01-UW3000-X100	1 000

See page 7 for technical data and ordering key



Hand switch – EHA



Benefits

- Robust ergonomic design
- Tactile buttons
- Easy mountable fastening hook
- 2 colors LED for power and feedback status

Standards

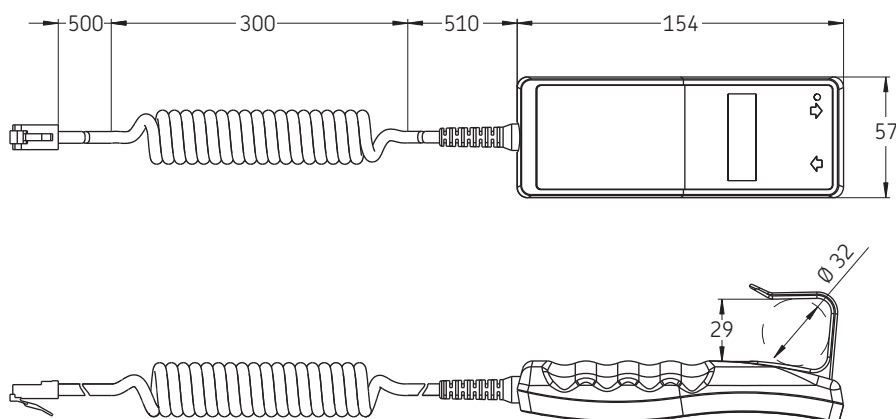
- IEC 60601-1:2005 (3rd edition) compliant

Suitable products

	Pillars			Socket boxes	
	CPMB1-1	CPMB1-2	CPMB2-2	ZDV-348220-002	ZDV-348221-002
EHA41-13N10N-000	●	●	●	●	●

Dimensional drawing

See page 7 for technical data and ordering key



Foot switch – STL



Benefits

- Easy and precise
- Ergonomic design

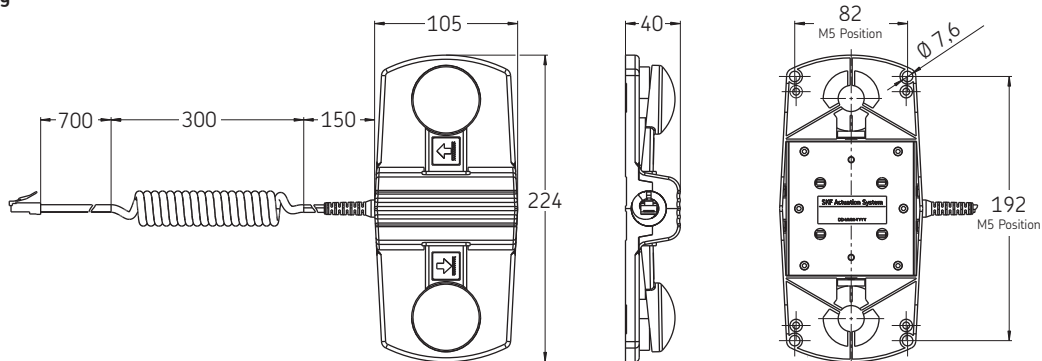
Standards

- IEC 60601-1:2005 (3rd edition) compliant

Suitable products

	Pillars	Socket boxes
	CPMB1-1 CPMB1-2 CPMB2-2	ZDV-348220-002 ZDV-348221-002
STL01-GW1000-X190	● ● ●	● ●

Dimensional drawing

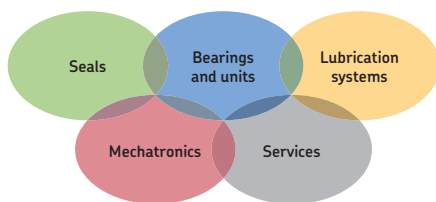


Switches – Technical data

	Unit	EHA4	STL	STK
Max. operating channels	n°	1	1	1
Operating power	V DC/mA	5/20	5/20	5/20
Type of protection	IP	67	x2	–
Color	–	Grey	Grey and anthracite	Grey
Indicator	–	LED 2 colors for power and feedback status	–	LED 2 colors for power and feedback status
Plug	–	RJ45	RJ45	RJ45
Hook	–	with hook	–	–
Symbols	–	with arrows up/down	with arrows up/down	with arrows up/down

Switches – Ordering key

Description	Designation	Order N°
Desk switch with LED, cable 0,5 m	STK01-SW3000-X100	0130025
Desk switch with LED, cable 1,0 m	STK01-UW3000-X100	0130026
Hand switch with LED and arrows, coiled cable 1,3 m	EHA41-13N10N-000	0131033
Foot switch, coiled cable 1,3 m	STL01-GW1000-X190	0131873



The Power of Knowledge Engineering

Combining products, people, and application-specific knowledge, SKF delivers innovative solutions to equipment manufacturers and production facilities in every major industry worldwide. Having expertise in multiple competence areas supports SKF Life Cycle Management, a proven approach to improving equipment reliability, optimizing operational and energy efficiency and reducing total cost of ownership.

These competence areas include bearings and units, seals, lubrication systems, mechatronics, and a wide range of services, from 3-D computer modelling to cloud-based condition monitoring and asset management services.

SKF's global footprint provides SKF customers with uniform quality standards and worldwide product availability. Our local presence provides direct access to the experience, knowledge and ingenuity of SKF people.



SKF BeyondZero is more than our climate strategy for a sustainable environment: it is our mantra; a way of thinking, innovating and acting.

For us, SKF BeyondZero means that we will reduce the negative environmental impact from our own operations and at the same time, increase the positive environmental contribution by offering

our customers the SKF BeyondZero portfolio of products and services with enhanced environmental performance characteristics.

For inclusion in the SKF BeyondZero portfolio, a product, service or solution must deliver significant environmental benefits without serious environmental trade-offs.

The CPMB telescopic pillars are included in the SKF BeyondZero portfolio because they cut power consumption by 72%, compared to standard SKF and competitor's pillars over a ten-year service life, reducing standby power losses.

Telescopic pillar – Ordering key

For accessories, see pages 4, 5, 6 and 7

C P M B - **2** **0 - 000**

Type

Voltage

100–240 V AC 50/60 Hz
24 V DC

1
2

Load:

Push (N)

1 000 Only for AC version

2 000

1
2

Tube set

2-section

2

Stroke length (mm)

200 Only for DC version

230

250

300

400

Other per 10 mm from 200 mm or 230 mm for AC version up to 400 mm

Motor orientation*

Motor in inner tube

Motor in outer tube

A
B

Operating device orientation

Operating device socket as the motor

Operating device socket at both sides

A
B

*Pillar can be placed with outer tube on the top or bottom (please refer to **page 3**)

® SKF is a registered trademark of the SKF Group.

© SKF Group 2014

The contents of this publication are the copyright of the publisher and may not be reproduced (even extracts) unless prior written permission is granted. Every care has been taken to ensure the accuracy of the information contained in this publication but no liability can be accepted for any loss or damage whether direct, indirect or consequential arising out of the use of the information contained herein.

PUB MT/P2 15341 EN · December 2014

This publication supersedes publication PUB MT/P8 13275 EN.